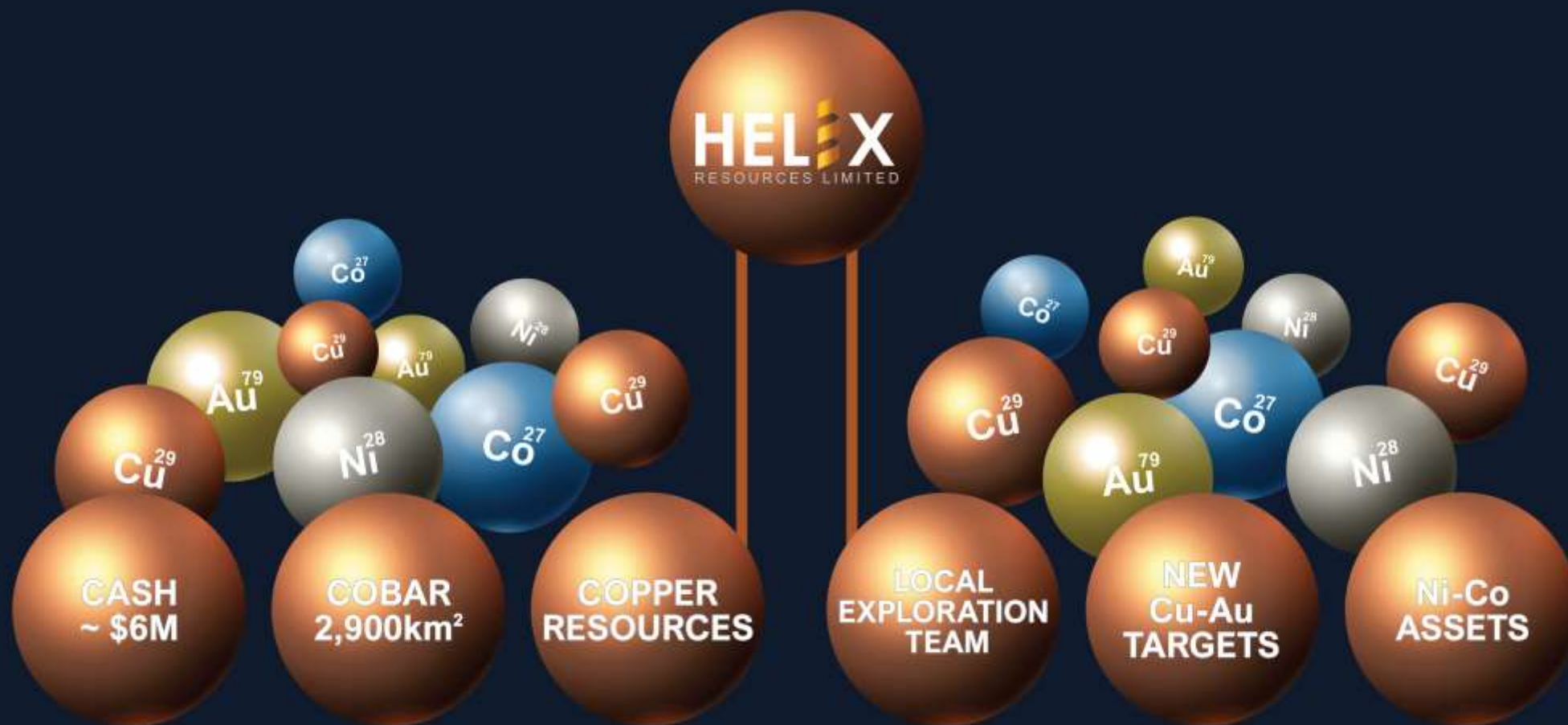


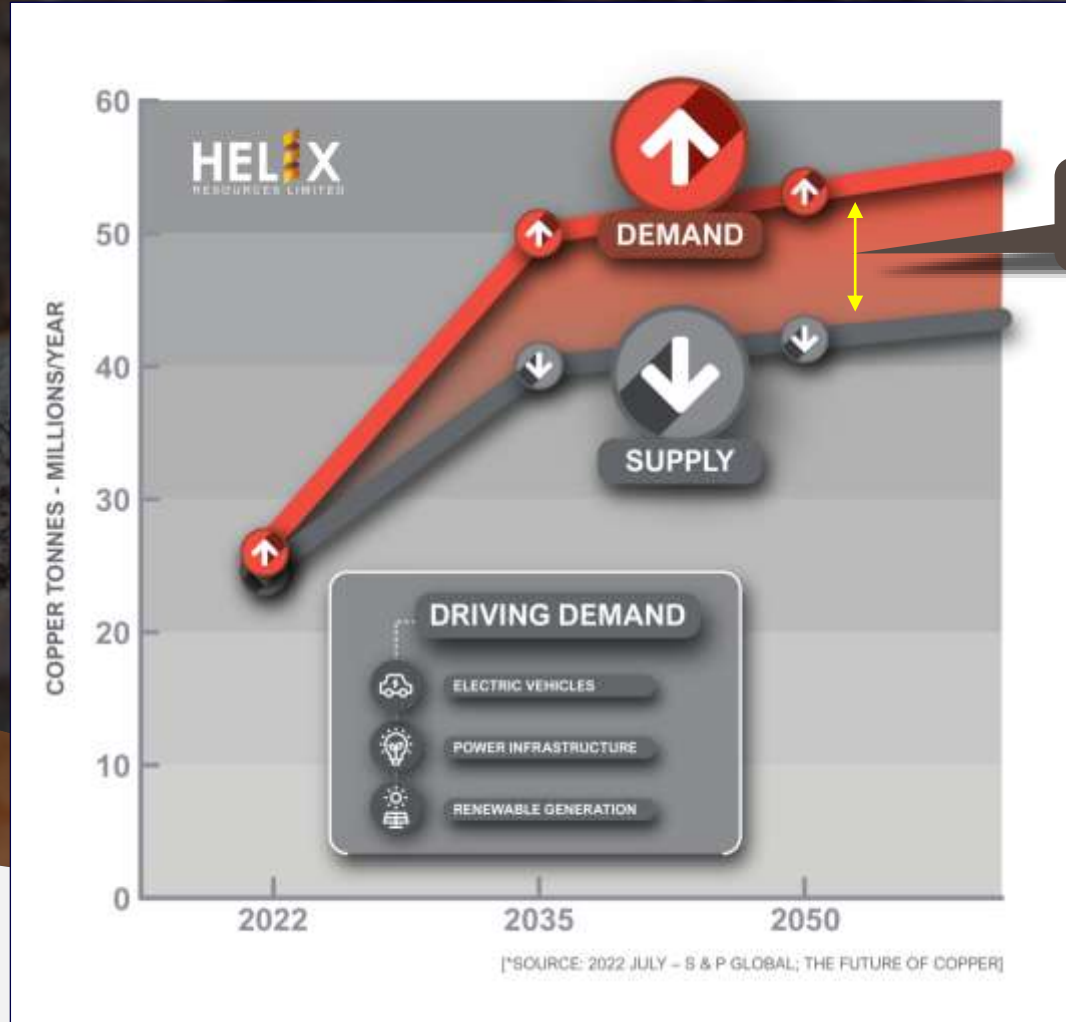
# THE 'COPPER POWERBALL'



**'SHORTENING THE ODDS TO DISCOVERY'**

Helix Webinar 24 August 2023

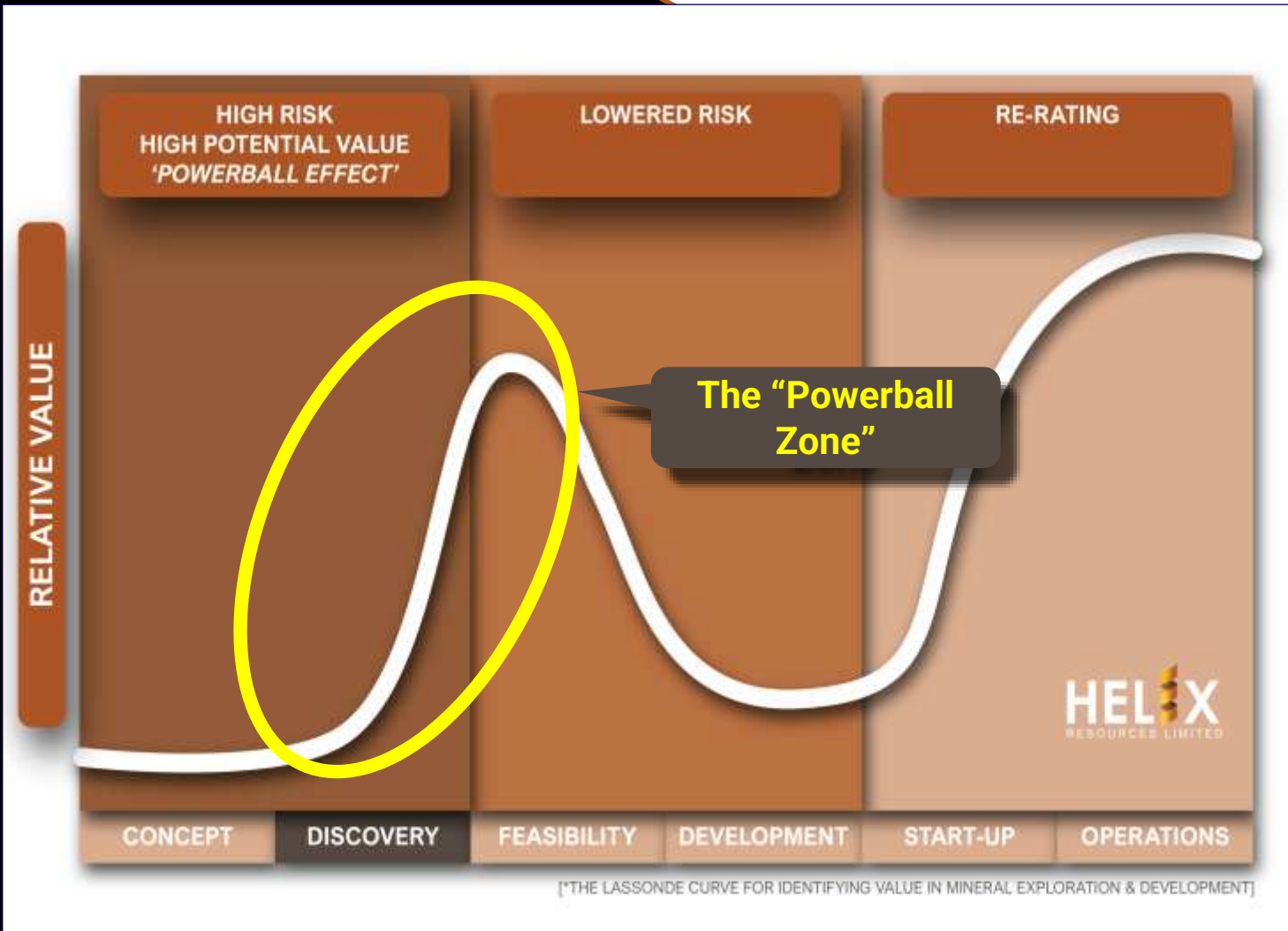
# Copper is the essential critical metal and a supply deficit is looming



**COPPER DEFICIT**

***“Decarbonisation and energy transition needs copper - regardless of power source or battery chemistry”***

# ASX:HLX in your portfolio ...just one 'Copper Powerball'



**'Shortening the odds' to discovery:**

- Drilling now
- Focused on new discoveries
- Generating exciting new targets
- Focused solely on Cobar region
- Funded ~\$6M cash
- Large strategic land position
- 'Cobar experts' – locally based team



**+4MT  
COPPER  
DISTRICT**

### ENDEAVOR

**CRH Resources Limited**  
1.6Mt Zn, 1.0Mt Pb  
& 47Moz Ag

### CSA MINE

**METALS  
ACQUISITION  
CORP**  
1.5Mt Cu, 27Moz  
Ag & 491kt Zn

### PEAK MINE

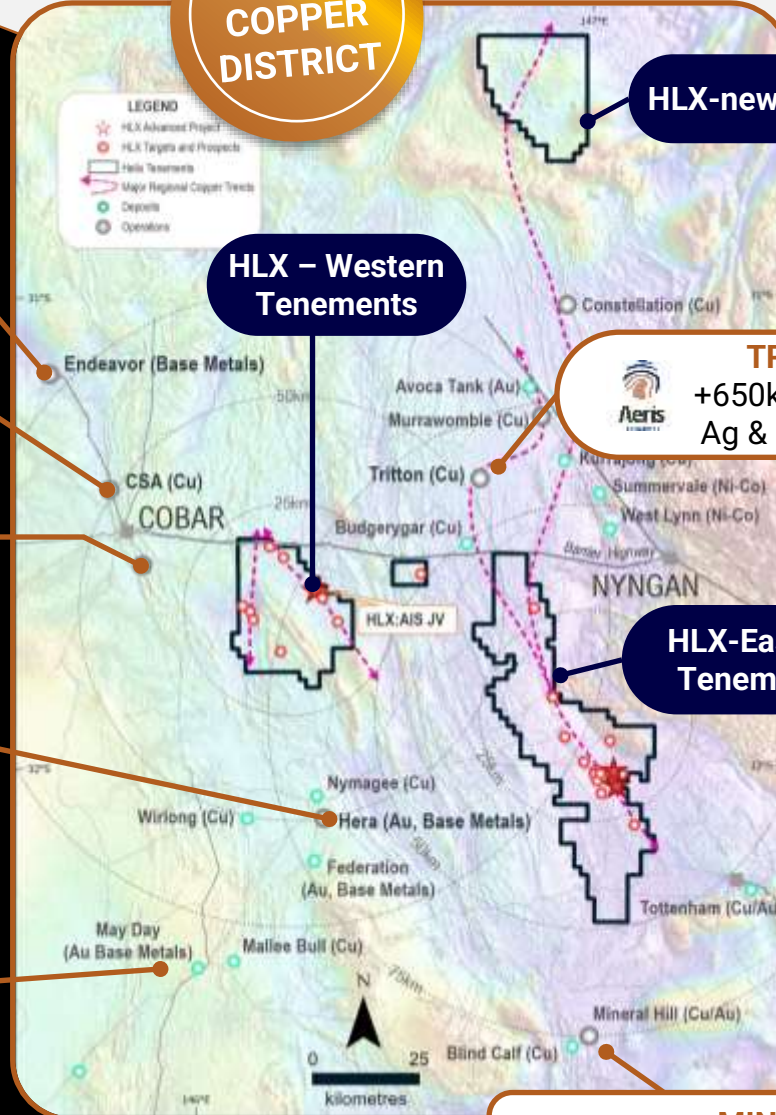
**aurelia  
METALS**  
2.7Moz Au, 6.6Moz  
Ag, 350kt Cu &  
430kt Pb-Zn

### HERA GOLD & FEDERATION

**aurelia  
METALS**  
243koz Au, 2.3Moz Ag,  
17kt Cu & 27kt Pb-Zn

### SOUTH COBAR DEPOSITS (4)

**peel mining  
LIMITED**  
216kt Cu, 322kt Zn,  
151kt Pb, 22Moz Ag  
& 204koz Au



**HLX-new Northern EL**

**HLX – Western  
Tenements**

### TRITTON

**Aeris  
resources**  
+650kt Cu, 3Moz  
Ag & 250koz Au

**HLX-Eastern  
Tenements**

### MINERAL HILL

**KSN KINGSTON  
resources**  
611Koz Au, 4.5Moz  
Ag, 70Kt Cu

# COBAR

## A PROLIFIC COPPER REGION

**Large strategic land position –  
creates discovery opportunities**

- Major regional metal endowment of:
  - ~4.3Mt Copper
  - ~5Moz Gold
  - ~110Moz Silver

**+4MT  
COPPER  
DISTRICT**

### ENDEAVOR

**CBH Resources Limited**  
1.6Mt Zn, 1.0Mt Pb  
& 47Moz Ag

### CSA MINE

**METALS  
ACQUISITION  
CORP**  
1.5Mt Cu, 27Moz  
Ag & 491kt Zn

### PEAK MINE

**aurelia  
METALS**  
2.7Moz Au, 6.6Moz  
Ag, 350kt Cu &  
430kt Pb-Zn

### HERA GOLD & FEDERATION

**aurelia  
METALS**  
243koz Au, 2.3Moz Ag,  
17kt Cu & 27kt Pb-Zn

### SOUTH COBAR DEPOSITS (4)

**peel mining  
LIMITED**  
216kt Cu, 322kt Zn,  
151kt Pb, 22Moz Ag  
& 204koz Au

### HLX – Western Tenements

### HLX-new Northern EL

### TRITTON

**Aeris  
TERRACON**  
+650kt Cu, 3Moz  
Ag & 250koz Au

### HLX-Eastern Tenements

### MINERAL HILL

**KSN KINGSTON  
RESOURCES**  
611Koz Au, 4.5Moz  
Ag, 70Kt Cu

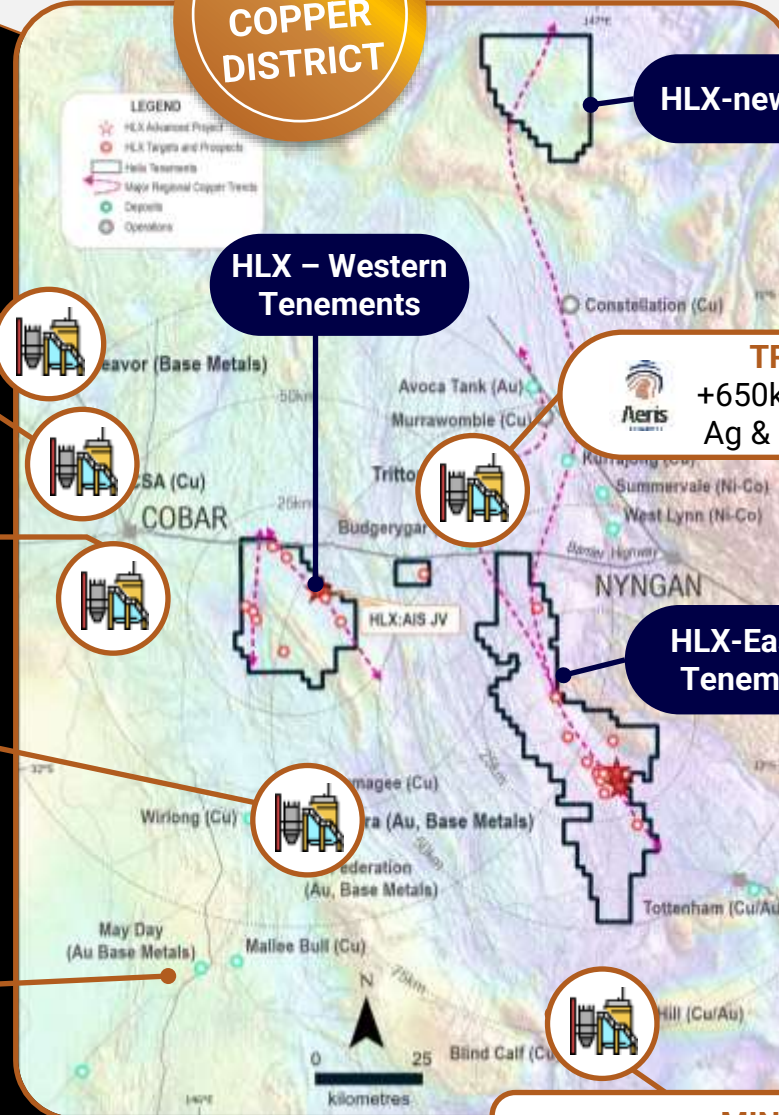
# COBAR

## A PROLIFIC COPPER REGION

**Production pathways with  
local processing options**

In close proximity to:

- 6 base metals/gold operations
- Towns, sealed roads, rail and reticulated power





# COPPER IN COBAR

Helix is focused solely on the Cobar region

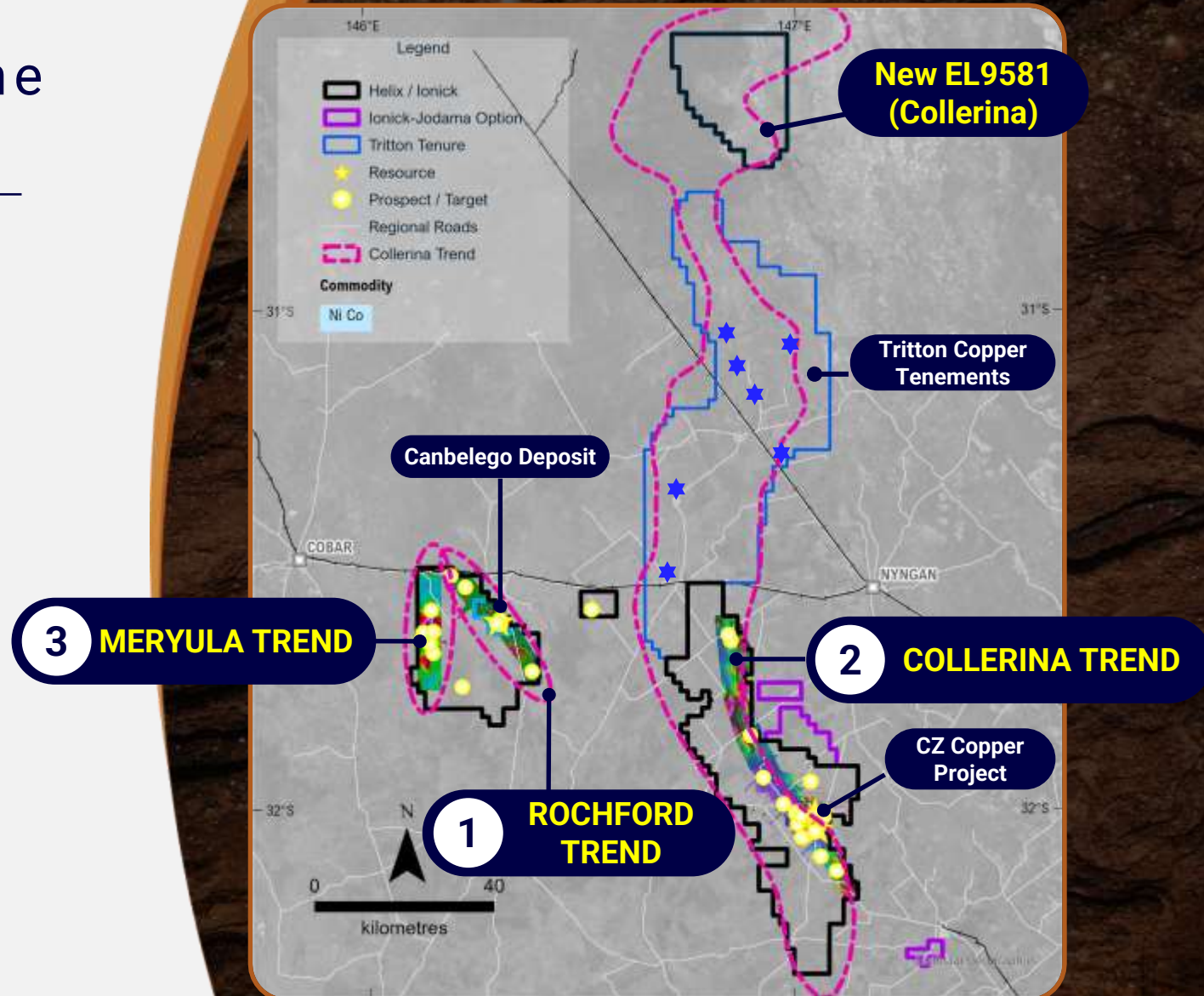
**Copper resource & high-priority targets on major regional trends**

**Three major regional scale copper trends:**

- 1 Rochford Trend – 30 km**  
Canbelego Mineral Resource<sup>1</sup>
- 2 Collerina Trend – +100km**  
The Central Zone (CZ) Copper Project
- 3 Meryula Trend – 25 km**  
Earlier stage Cu (+Pb/Zn) targets

**2,900km<sup>2</sup> of prospective exploration tenements**

**Expanding ground position – new northern EL9581<sup>2</sup>**



<sup>1</sup>Refer ASX Report 14 June 2023 for details on MRE

<sup>2</sup>Refer ASX report 31 May 2023

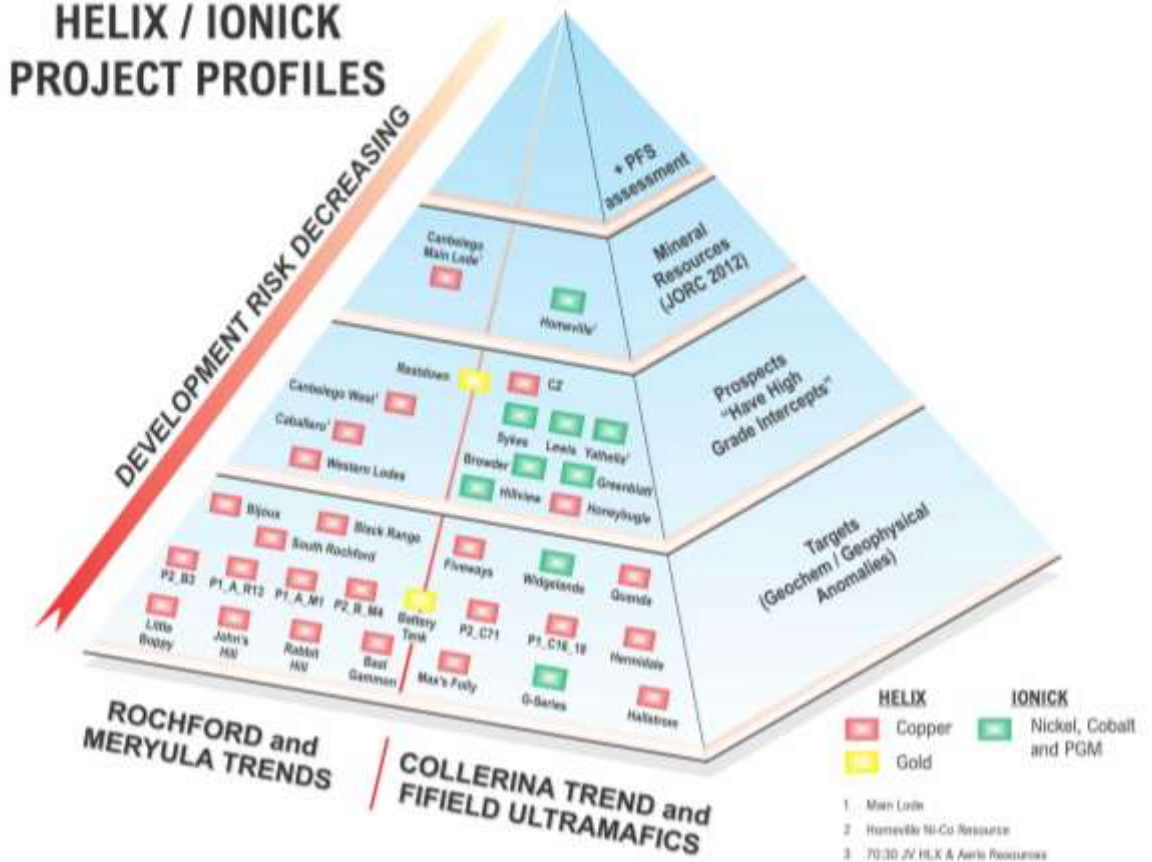


# COPPER IN COBAR

Strategy is aggressive target generation and drill testing to build project profile

‘Copper Powerball’...is a numbers game! Test lots of targets – eliminate some and advance others

## HELIX / IONICK PROJECT PROFILES







# COPPER IN COBAR

## LOCALLY BASED TEAM – THE ‘COBAR EXPERTS’

Tapping into ~150 years of combined, mainly local, geological experience



Gordon Barnes (+35 yrs.)



Mike Rosenstreich (+35 yrs.)



John Heavey (16 yrs.)



Vladimir David (+35 yrs.)



Juan Farias (4 yrs.)



Joel Fitzherbert (+26 yrs.)



Morgan Stewart (4 yrs.)



John Catterson (2 yrs.)



# COPPER IN COBAR

## DISCOVERY - RECENT HIGHLIGHTS

### 1. High Grade Copper Projects

#### Canbelego Mineral Resource<sup>1</sup>

**NEW** - 77% increase in contained copper

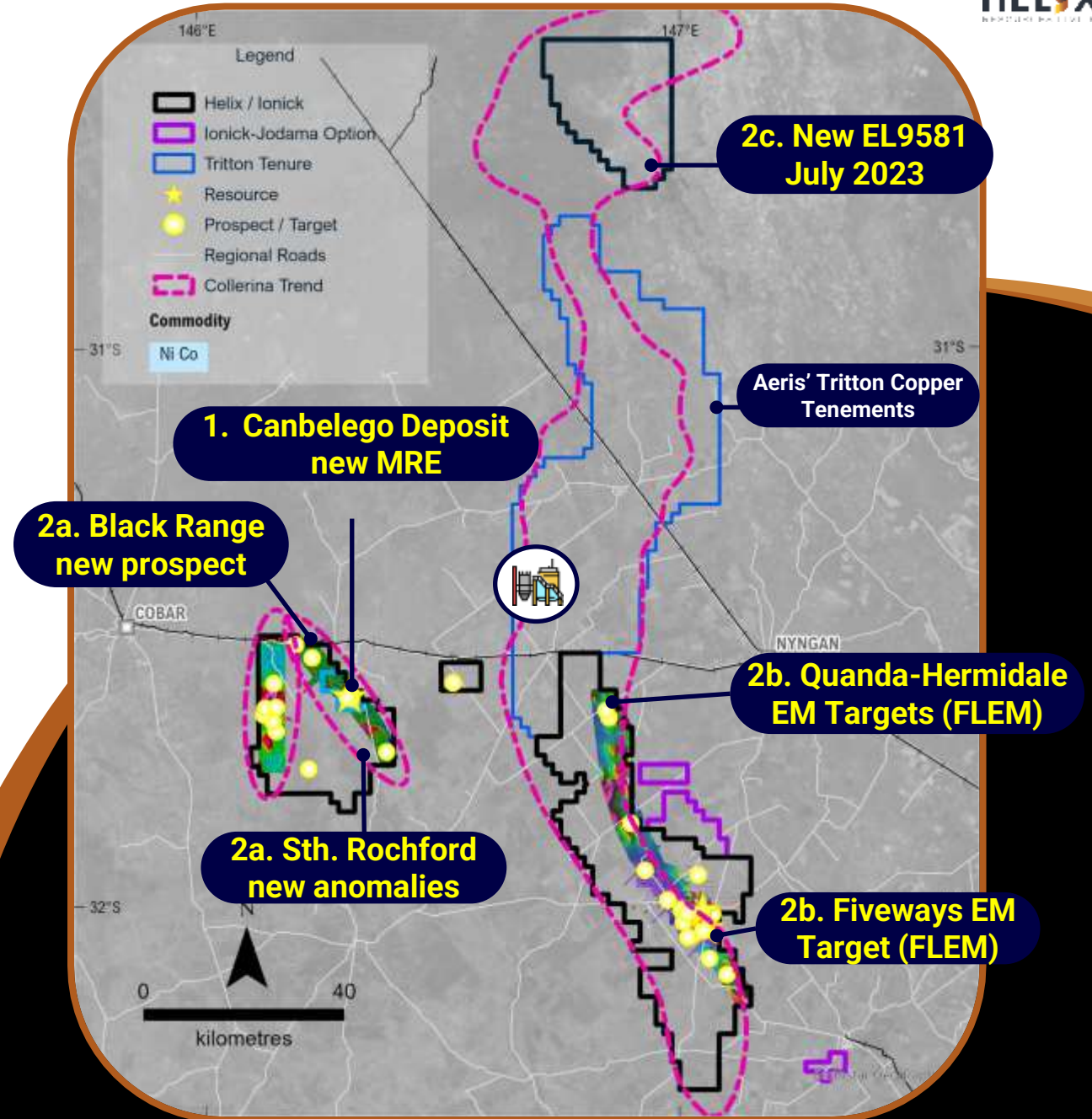
### 2. New discoveries from regional-scale exploration:

#### a. In the East (Collerina Trend) – new targets

- EM is a key 'discovery tool' in the region eg Constellation discovery by Aeris in Dec 2019
- Ground EM - confirms anomalies
- **Eg:** Fiveways & Quanda targets – drilling commenced

#### b. In the West (Rochford Trend) – new targets

- Surface geochem & geophysical anomalies
- **Eg:** Black Range – 5km x 1.7km Cu-Bi anomaly
- **Eg:** Bijoux – 2.2km x 1.2km Cu-Bi anomaly





# 1 ROCHFORD TREND

HIGHLY PROSPECTIVE FOR  
'COBAR-STYLE' DEPOSITS

## Cobar style high-grade copper deposits

### Exploration Model – 'Cobar style' deposits

- Small 'footprints' but deep vertical extensions
- Typically multiple parallel lodes
- High-grade copper

### Example: CSA Copper Deposit<sup>1</sup> near Cobar:

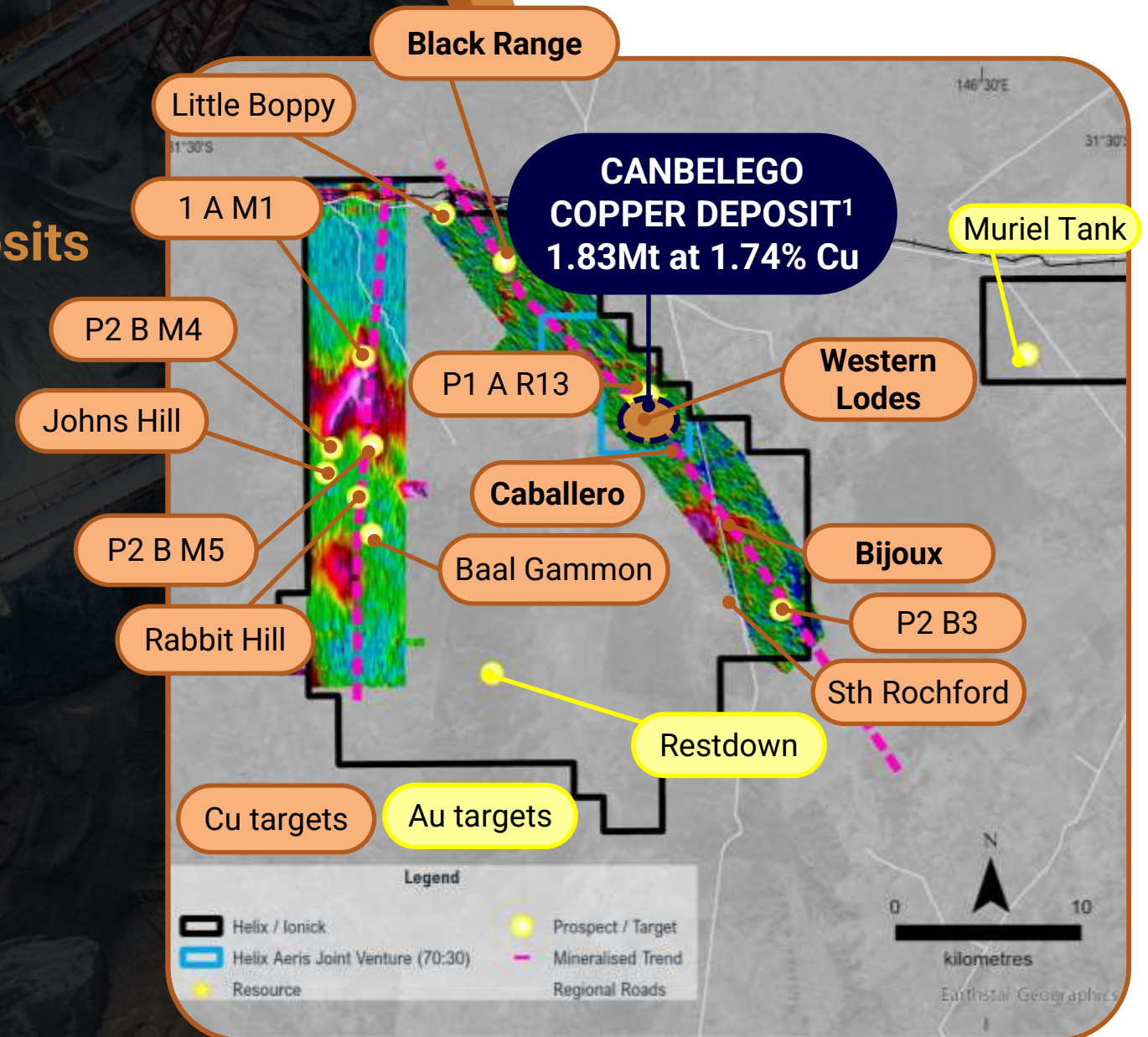
- One of the highest grade copper mines in the world
- ~1.5Mt Cu & 27Moz Ag endowment

### New high-grade copper Mineral Resource at Canbelego

- Canbelego MRE is 1.83Mt at 1.74% Cu for 31.8Kt contained copper<sup>1</sup>

### Many prospects & targets – being tested, including:

- Western Lodes
- Caballero
- Bijoux
- Black Range



<sup>1</sup>Refer Appendix A for Mineral Resource details



1

# ROCHFORD TREND

CANBELEGO JV (HLX 70% & AIS 30%)

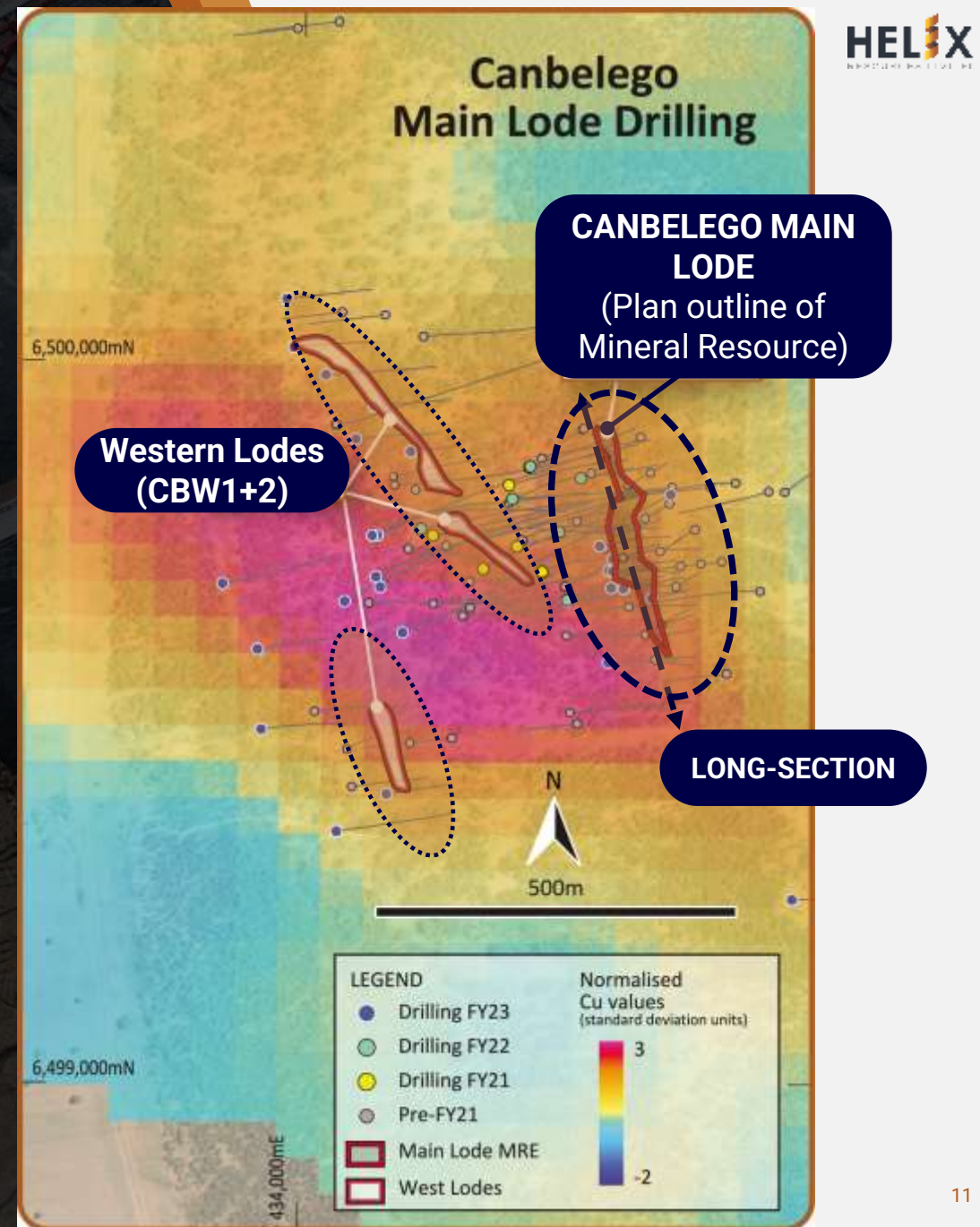
**'Cobar style' – high grade, steep Cu shoots**

## New Canbelego Main Lode Mineral Resource

- Core focus for HLX since mind 2021. Project was dormant since 2013.

## Aggressive FY24 Work planned to expand resources and new discoveries

- New drilling
- New geochem
- New geophysics





1

# ROCHFORD TREND

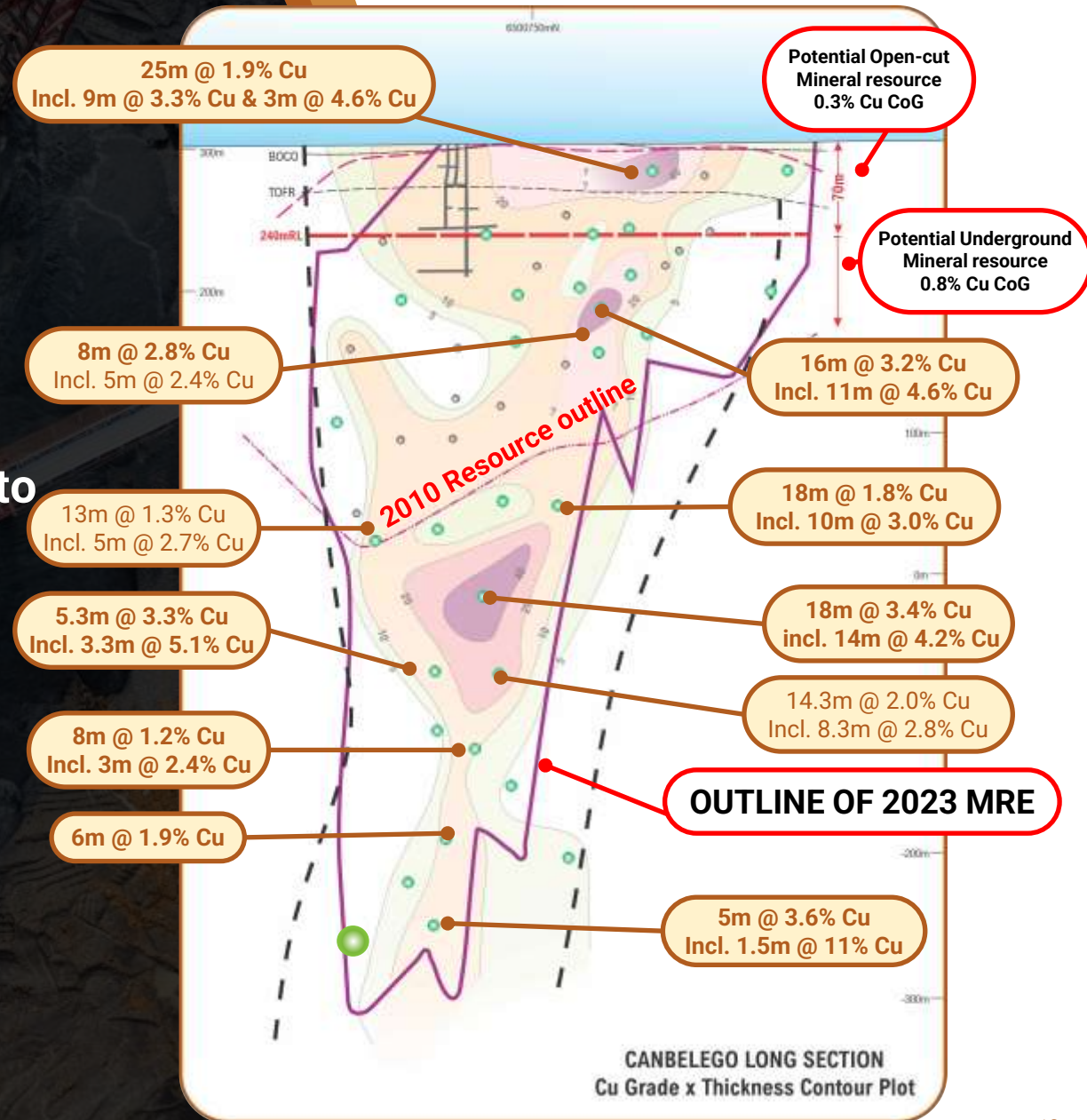
## CANBELEGO MAIN LODGE

### Canbelego Main Lodge Mineral Resource<sup>1</sup>:

- 1.83Mt at 1.74% Cu with 31.8Kt contained copper
- 77% (13.8Kt) increase in contained copper to the 2010 estimate
  - 22% (0.3Mt) increase in tonnage
  - 45% (0.54% Cu) increase in copper grade

### Resource growth potential:

- Western Lodes – only 200m to the west
- Caballero Prospect
- At depth guided by geophysical modelling (DHEM)
- New VTEM and geochem targets





# NEW DISCOVERIES IN THE EAST?

## ELECTROMAGNETICS (EM) – A PROVEN ‘DISCOVERY TOOL’

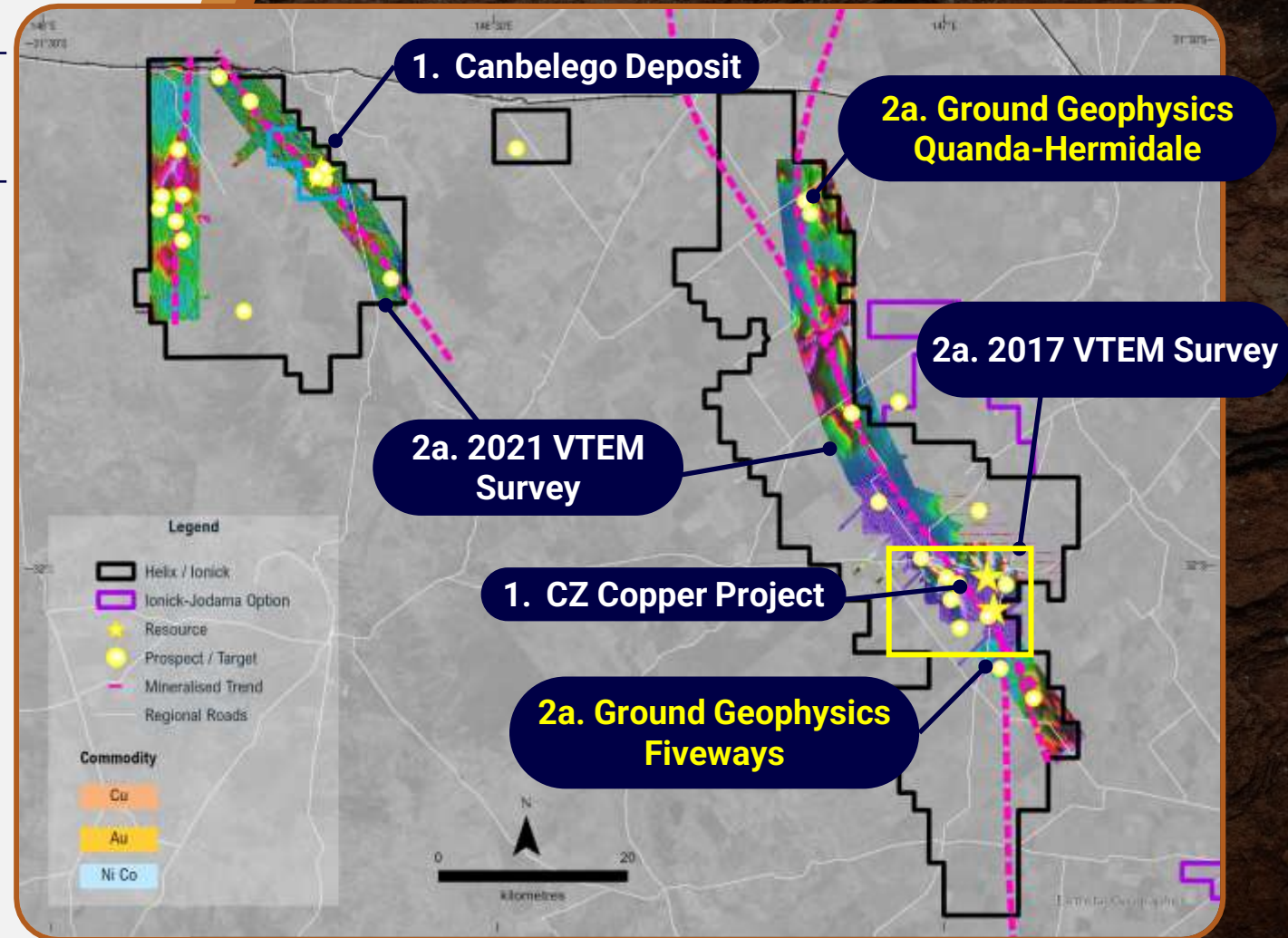
2b.

### Airborne electromagnetics (VTEM)

- ‘Discovery tool’ in the region eg Constellation discovery by Aeris in Dec 2019
  - 2017 – HLX 20%<sup>2</sup> VTEM (around CZ)
  - 2021 – HLX 100% VTEM
- ~24 priority VTEM targets identified in East & West

### Initial follow-up - Fixed Loop EM (FLEM) confirms VTEM targets

- Distinct basement conductors modelled:
  - Quanda-Hermidale – 3 targets
  - Fiveways – 1 target



<sup>1</sup>Refer ASX Report 14 June 2023

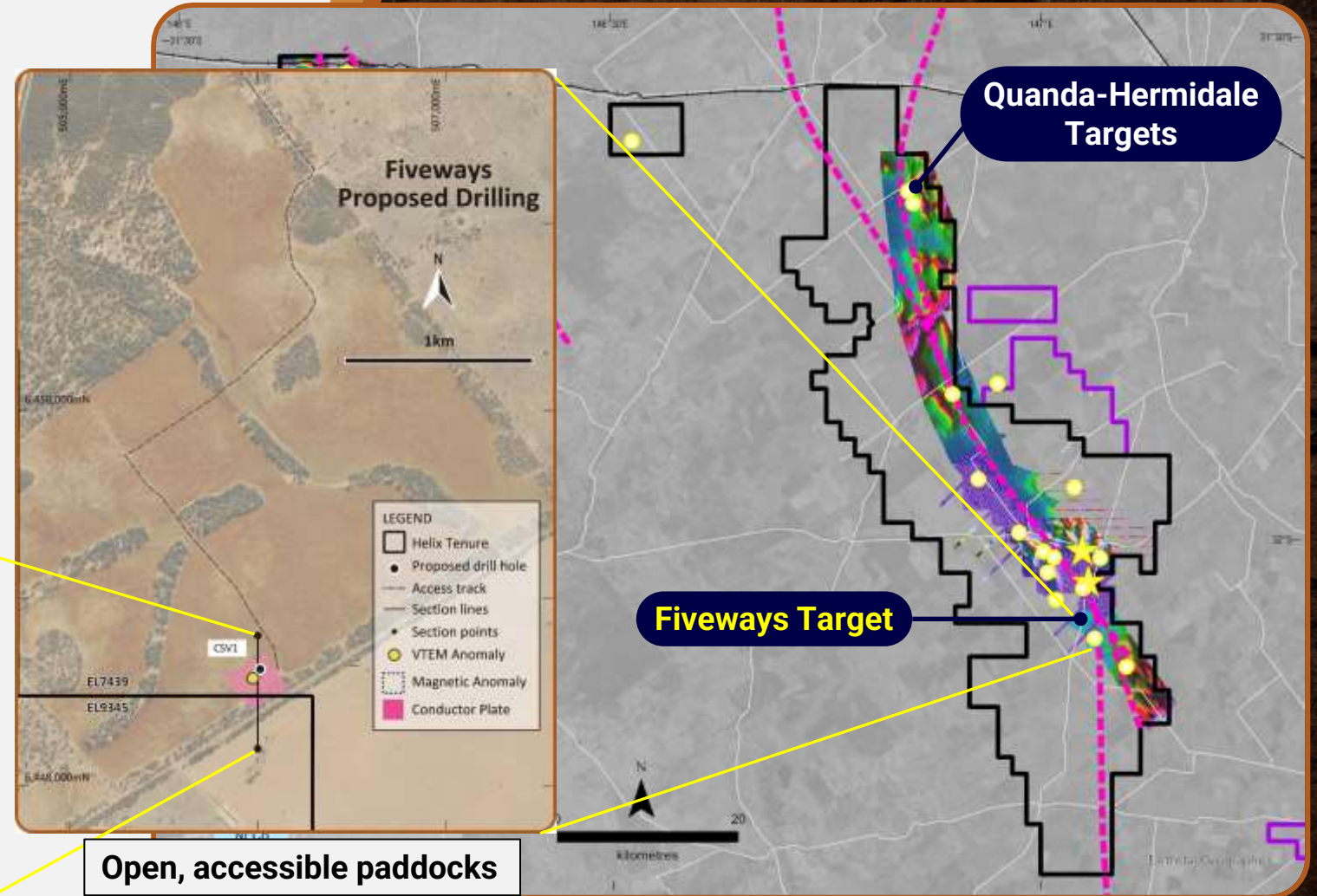
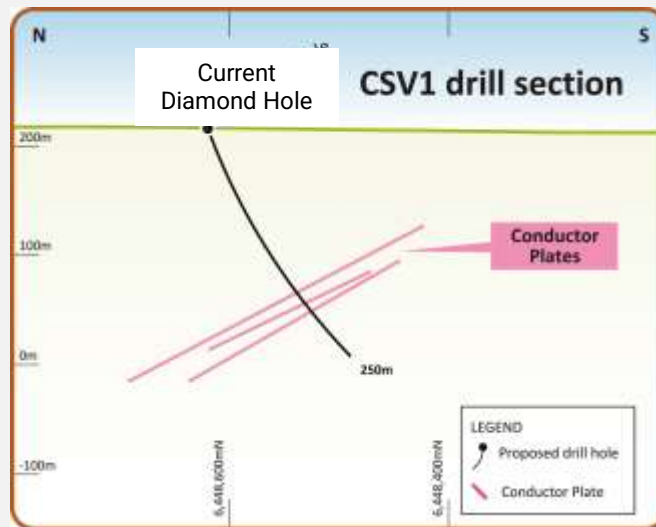
<sup>2</sup>Percentage of current known mineralised trends with VTEM coverage

# NEW DISCOVERIES IN THE EAST?

2b.

## Drilling Fiveways Target – now!

- Distinct basement conductors prospective for new copper deposits – never drilled
- Follow-up
  - Downhole EM & assays
  - Further drilling?



<sup>1</sup>Refer ASX Report 14 June 2023

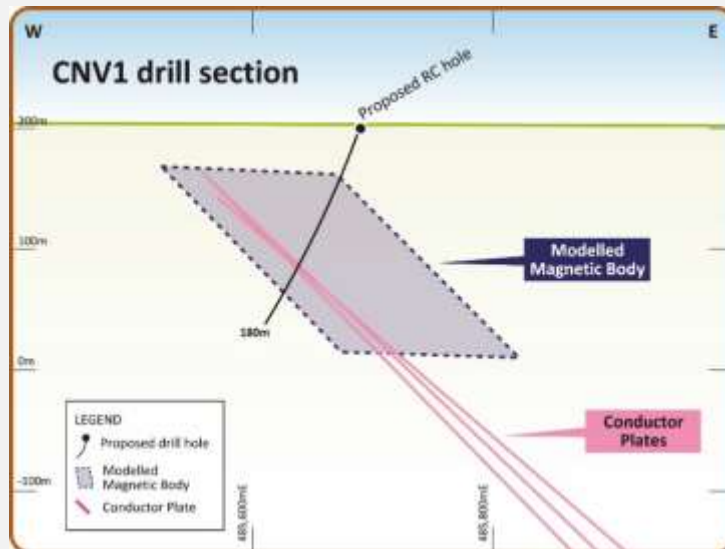
<sup>2</sup>Percentage of current known mineralised trends with VTEM coverage



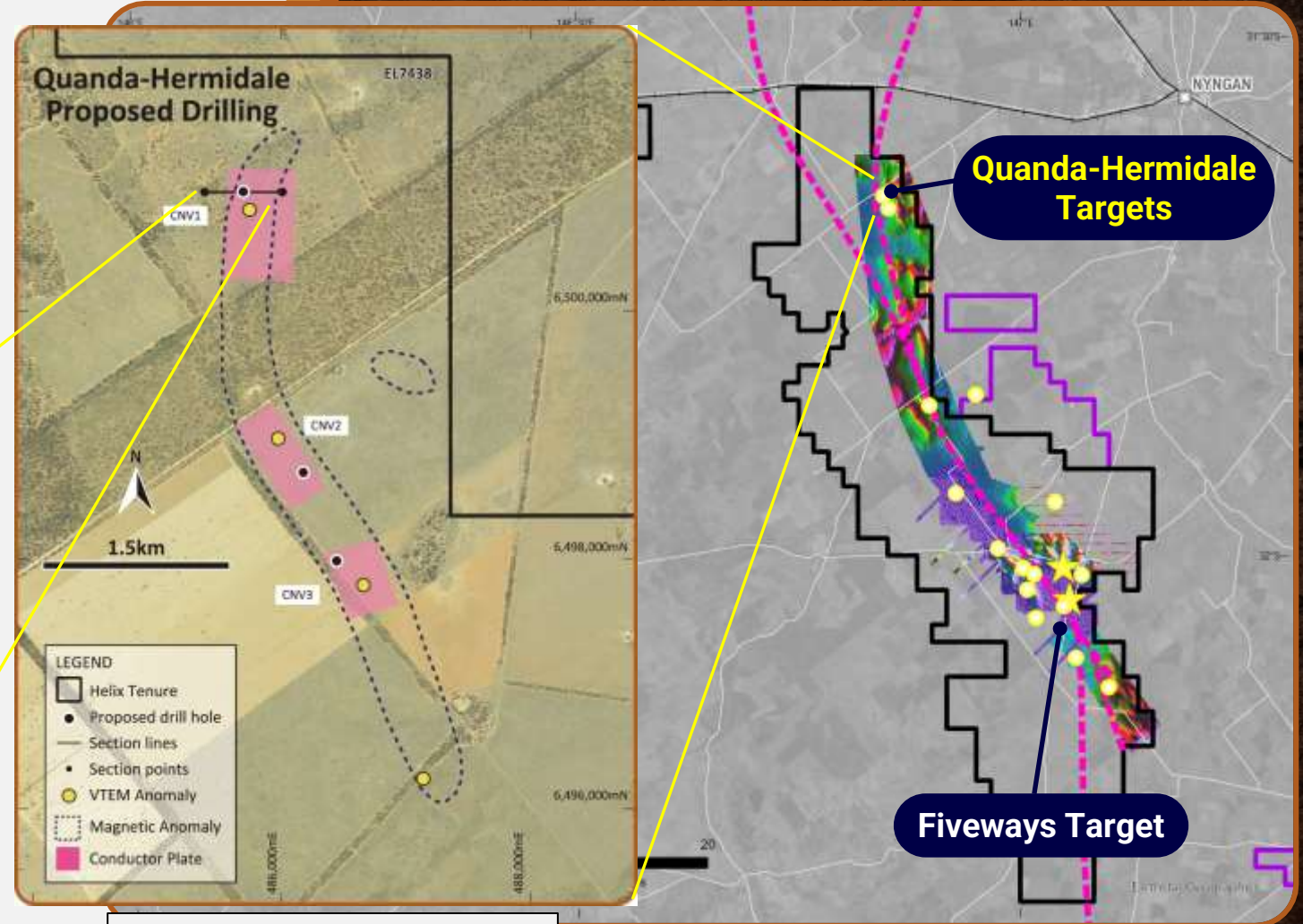
# NEW DISCOVERIES IN THE EAST?

## 2b. Drilling Quanda-Hermidale Targets

- ~1,250m RC drilling
- Basement conductors and coincident magnetic anomalies – never drilled
- Follow-up – assays and drilling



Series of RC holes for each target



Open, accessible paddocks

<sup>1</sup>Refer ASX Report 14 June 2023

<sup>2</sup>Percentage of current known mineralised trends with VTEM coverage



2

# NEW DISCOVERIES IN THE WEST?

## REGIONAL WORK—NEW TARGETS

**Multi-element surface sampling program  
— key regional scale ‘discovery tool’**

- Targeting copper, base metals & gold mineralisation
- Utilising ‘pathfinder’ element associations - another 54 elements

## **Auger & Lag geochemical sampling**

- Fast, effective and low-cost
- Currently 2 sampling crews working on HLX ground
- Currently >2,000 samples in process

Refer ASX Report -24 August 2023





2

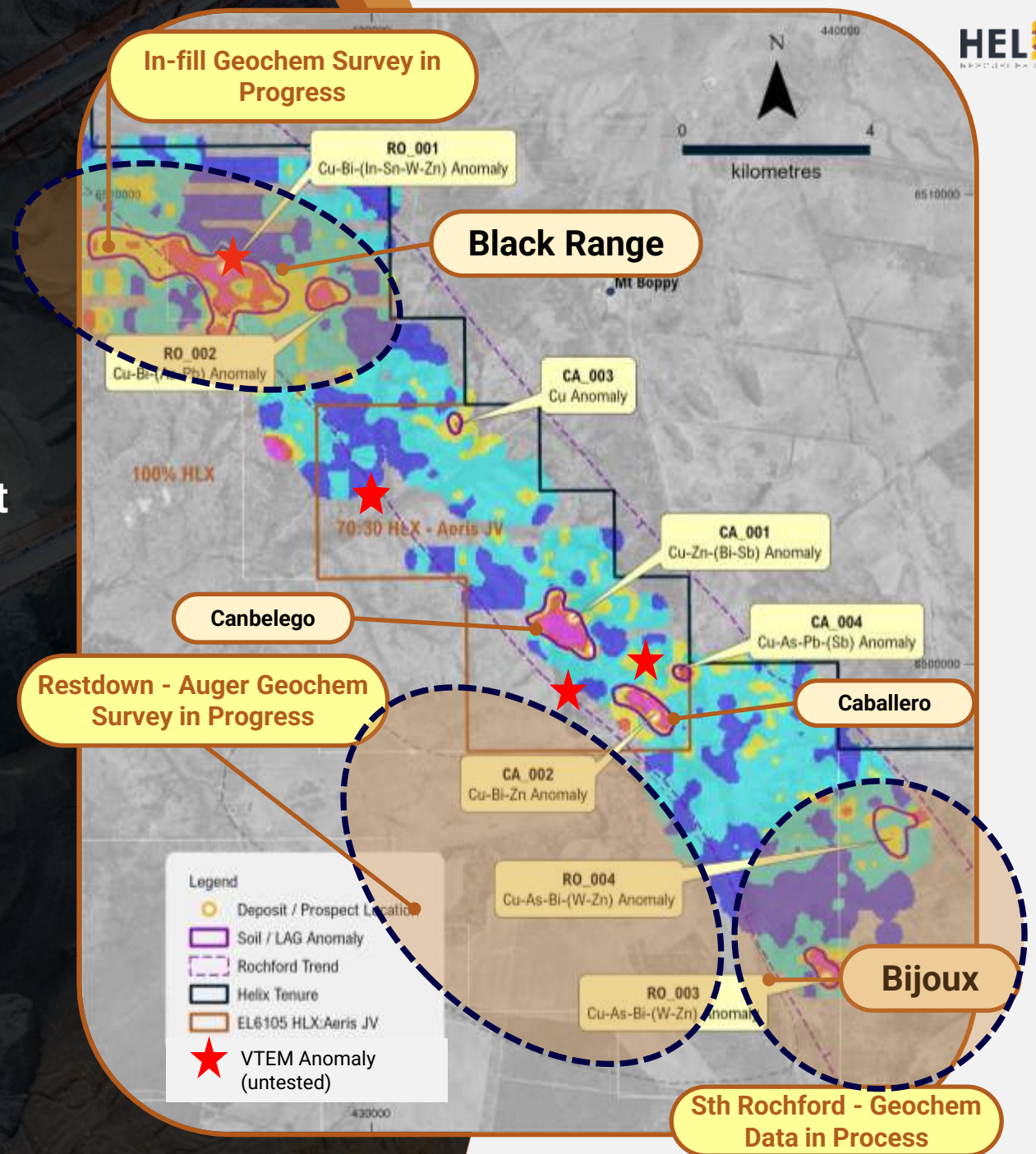
# NEW DISCOVERIES IN THE WEST?

## REGIONAL SURFACE GEOCHEMICAL WORK

2a.

### Rochford Trend - promising early results

- Black Range – large scale & important elemental association
  - Bijoux Prospect – upgraded
- Work ongoing and assays pending for:
- Restdown area
  - South Rochford
  - Black Range





2

# NEW DISCOVERIES IN THE WEST?

NEW TARGET - EXAMPLE

2a.

## Black Range Cu-Bi (In-Sn-W-Zn) Anomaly

- Large scale - 6 x 1.7km anomalous zone
- Extensive historical workings – 80m deep shaft & copper lode up to 21m wide recorded
- Rock chip assays up to 2.6% Cu
- No previous drill testing

## Bijoux Cu (Ag-Mo-Bi) Anomaly

- Large scale – 2.2 x 1.2km
- High tenor anomaly
- Many similarities to Canbelego Main Lode deposit

**Follow-up: further define drill targets and drill**



**Black Range workings**



2

## NEW DISCOVERIES?

CORE FOCUS – NEW COPPER DEPOSITS

**Regional scale exploration is gaining momentum:**

- Geophysics - new VTEM & FLEM data
- Geochemistry - Auger samples & multi-element assays
- Geology – geological eyes and thoughts
- Drill testing has commenced

***Our focus – to define and test new copper (& gold) targets***





# SUSTAINABILITY

## GETTING SET-UP EARLY

Helix has a strong 'Sustainability Platform' including sound ESG inputs

Focus areas for 2023:

Creating a sound platform to build our business upon



### Current Focus:

- Traditional Owner engagement and cultural awareness
- Employee development
- Community Engagement - retained a Community & Landowner Relations Manager to ensure Helix is in tune with Community issues and potential concerns related to its activities
- Workplace Safety and Training - Workplace safety standards and procedures reviewed and updated

### OPERATIONS & REVENUE

### EXPLORATION & DISCOVERY

### SUSTAINABILITY PLATFORM



Respectful, Accountable, Bold,  
Innovative, and Analytical





# HLX SNAPSHOT

CORPORATE  
(ASX:HLX)

## CAPITAL STRUCTURE

Share price (23 August 2023)	\$0.005
Shares on Issue	2,323M
Options & Performance Rights (unlisted)	73.5M
Market Capitalisation	\$11.6M
Cash (30 June 2023)	\$5.9M
Number of Shareholders	~3,500

## BOARD & MANAGEMENT

**Peter Lester (Mining Eng./BD)**  
Non-Executive Chairman

**Mike Rosenstreich  
(Geo./ Finance)**  
Managing Director

**Kylie Prendergast (Geo.)**  
Non-Executive Director

**Gordon Barnes (Geo.)**  
Exploration Manager

## KEY SHAREHOLDERS (10 Aug. 2023)

**Yandal Investments Pty Ltd**  
2.2%

**Technical Ceramic Marketing  
Services Pty Ltd**  
2.2%

**Mr. Bulent Besim**  
1.9%

**AG Investment Services Pty Ltd**  
1.8%

**Top 21 Holders hold 25.0% of fpo Shares**

HLX: 12-month share price & volume



# Upcoming News

Near-term planned news flow is focused around drilling of new targets:

Q1-2  
FY24

AUGUST

- **Drilling** – test new targets at Quanda-Hermidale & Fiveways
- Investor presentations; Sydney & Melbourne
- Surface sampling update – new target generation

SEPTEMBER

- **Drilling** - testing new targets on Rochford Trend
- New target generation results – ongoing geochem/geo work
- Ionick Metals (Ni-Co) update

OCTOBER

- **Drill assays** – start of assay news flow
- Ongoing drilling update – new target testing?
- Investor event - IMARC



# CORPORATE PERSPECTIVES

## INVESTMENT SUMMARY

HLX is poised for new discoveries; well-funded and drilling, offering investors leverage to copper exploration success focused on Cobar

*just one Copper Powerball.....*







## CONTACT

**MIKE ROSENSTREICH**

Managing Director

[helix@helixresources.com.au](mailto:helix@helixresources.com.au)

Level 13, 191 St Georges Terrace,  
Perth WA 6000

T: +61 8 9321 2644

[helixresources.com.au](http://helixresources.com.au)

ASX:HLX



# APPENDIX A

## MINERAL RESOURCE ESTIMATES

### Canbelego Main Lode (June 2023)

MRE Category	Tonnes	Grade (Cu%)	Cu-Metal (t)
<i>Total opencut MRE, ≥240mRL; 0.3 Cu% cut-off grade &amp; underground MRE, &lt;240mRL; 0.8 Cu% cut-off grade</i>			
Indicated	340,600	1.65	5,620
Inferred	1,493,700	1.75	26,140
<b>Total: Opencut &amp; Underground</b>	<b>1,830,000</b>	<b>1.74</b>	<b>31,842</b>
MRE Category	Tonnes	Grade (Cu%)	Cu-Metal (t)
<i>Potential opencut MRE, ≥240mRL; 0.3 Cu% cut-off grade</i>			
Indicated	99,700	1.28	1,276
Inferred	282,300	1.21	3,416
<b>Total: potential opencut MRE</b>	<b>377,000</b>	<b>1.23</b>	<b>4,637</b>
<i>Potential underground MRE, &lt;240mRL; 0.8 Cu% cut-off grade</i>			
Indicated	240,900	1.81	4,360
Inferred	1,211,400	1.88	22,774
<b>Total: potential underground MRE</b>	<b>1,453,000</b>	<b>1.87</b>	<b>27,171</b>

\* Numbers may not sum due to rounding

\* Numbers are rounded to reflect that they are estimates

\* A top-cut grade of Cu 12% was applied to the MRE

\* Stated MRE complies with Reasonable prospects of eventual economic extraction

### Homeville Nickel-Cobalt (September 2018)

Category	Cut-off grade (Ni%)	Tonnes (Mt)	Ni %	Co %	Fe %	Al %
<b>Indicated</b>	0.7	2.2	0.98	0.04	19	2.8
<b>Inferred</b>	0.7	15.7	0.88	0.06	23	3.7
<b>Total</b>		17.9	0.89	0.06	22	3.6

Rounding discrepancies may occur in summary table

#### CANBELEGO

##### MRE REPORT

For full details of MRE please refer to ASX Report 14 June 2023

##### Exploration Results

For full details of exploration results refer to the ASX announcements 3 May 2021, 12 May 2021, 31 May 2021, 3 June 2021, 23 June 2021, 21 July 2021, 12 August 2021, 19 January 2022, 10 February 2022, 12 April 2022, 5 May 2022, 1 September 2022, 10 October 2022, 30 November 2022, 8 December 2022, 13 December 2022, 19 December 2022, 31 January 2023, 7 February 2023, 28 March 2023 & 5 June 2023.

**Helix Resources is not aware of any new information or data that materially effects the information in these announcements.**

#### HOMEVILLE NICKEL COBALT MINERAL RESOURCE REPORT

For full details of the Homeville Nickel-Cobalt Mineral Resource estimate refer to ASX Report 28 September 2018 from Alpha HPA, formerly Collierina Cobalt Ltd.

**Helix Resources is not aware of any new information or data that materially effects the information in these announcements.**

# APPENDIX B

## KEY PERSONNEL



**Peter Lester**  
**Non-Executive Chairman, Mining Engineer**

Mr. Lester has over 40 years' experience in the mining industry and has held senior executive positions with North Ltd, Newcrest Mining Limited, Oxiana/Oz Minerals Limited and Citadel Resource Group Limited. Mr. Lester's experience covers operations, project and business development and general corporate activities including financial services. Mr. Lester has served on several ASX listed and private mining boards and is currently Non-Executive Director of Gateway Mining Ltd and Non-Executive Chair of Aurora Energy Metals Ltd.



**Kylie Prendergast**  
**Non-Executive Director, Geologist**

Dr. Prendergast is an experienced geologist and technical leader with over 25 years' experience within the international mining and resource sector. She has worked across a range of different operating jurisdictions, including significant in-country assignments and expatriate roles. This has included substantial business development, project technical and economic evaluation, and commercial management, including direct interaction with a range of stakeholders in global resource capital markets.



**Mike Rosenstreich**  
**Managing Director, Geologist / Finance**

Mr. Rosenstreich has a blend of technical and commercial skills gained over 30 years as a mining & exploration geologist and as a resources banker which culminated in various leading corporate roles discovering, developing and operating gold and base metals projects and mines. A core strength is his ability to 'bridge' the gap between technical and financial considerations to build businesses. He has recent experience in the commercialisation of specialty 'non-commodity' materials such as tantalum, graphite, REEs, and mineral sands - all essential to the energy transformation underway. Copper, nickel and cobalt are commodities – and Helix provides an exciting opportunity to remain involved in these essential 'energy metals'.



**Meagan Hamblin**  
**Chief Financial Officer**

Ms. Hamblin is a Director of Meridian Corporate Consultants with extensive experience in financial reporting, corporate accounting and advisory services. Meagan is a Chartered Accountant, a certified Xero advisor and an associate member of the Governance Institute of Australia.



**Ben Donovan**  
**Company Secretary**

Mr. Donovan is a member of the Governance Institute of Australia and provides corporate advisory, IPO and consultancy services to a number of companies. Mr. Donovan is currently a company secretary of several ASX listed and public unlisted companies and has gained experience across resources, agritech, biotech, media and technology industries.



**Gordon Barnes**  
**Exploration Manager**

Mr. Barnes is a highly experienced and well-respected exploration geologist based in Orange, NSW. Gordon has over 30 years of practical mineral exploration experience, ranging from active field-based projects through to multi-commodity project generation initiatives in Australia and overseas. He has extensive NSW copper and gold exploration experience. Gordon is a Member of the Australian Institute of Geoscientists and holds a Masters in Geology (UWA), a BSC in Applied Science – Geology (RMIT) and is a Graduate of the Australian Institute of Company Directors.



# APPENDIX C

## REGIONAL PRODUCERS & DEPOSITS



### TRITTON COPPER OPERATIONS<sup>1</sup>

- Refer Group Report on Mineral Resources & Ore Reserves 15 November
- <https://www.aerisresources.com.au/>

### CSA MINE<sup>2</sup>

- Glencore 2021 Reserves & Resources Report
- Metals Acquisition Corp. Inc. Reports – 3 March 2022 and 23 November 2022
- <https://www.glencore.com/investors/reports-results/reserves-and-resources>
- <https://www.metalsacquisition.com>

### PEAK GOLD OPERATIONS<sup>3</sup> & HERA MINE

- Aurelia Metals 2021 Annual Report
- ASX Report 10 October 2022
- <https://www.aureliametals.com/investors/annual-reports>

### MINERAL HILL<sup>6</sup>

- <https://kingstonresources.com.au/wp-content/uploads/2021/11/2302299.pdf>
- ASX Report 19 September 2022



### ENDEAVOR LEAD/ZINC<sup>4</sup>

- Currently Care & Maintenance
- <https://www.cbhresources.com.au/endeavor-mine/>



### MT BOPPY GOLD<sup>5</sup>

- Manuka Resources 2021 Annual Report
- <https://www.manukaresources.com.au/>



### COBAR BASE METAL ASSETS<sup>7</sup>

- Multi-deposits: May Day, Mallee Bull, Wagga Tank, Southern Nights and Wirlong
- Peel Mining ASX Report 9 January 2023
- <https://www.peelmining.com.au/investor-centre/asx-announcements/>



### OTHER PUBLIC DOMAIN DATA

- Production and resource data from NSW mineral occurrence database (MIV\_COMM\_RES?PROD\_TCC table, November 2022)
- <https://www.regional.nsw.gov.au/meg>



# IMPORTANT NOTICES

This presentation has been authorised by the Board of Helix Resources Limited

## Competent Persons Statement

The information in this report that relates to exploration results, and geological data for the Cobar projects is based on information generated and compiled by Mr Gordon Barnes and Mr Mike Rosenstreich who are both employees and shareholders of the Company. Mr Barnes is a Member of the Australian Institute of Geoscientists and Mr Rosenstreich is a Fellow of the Australasian Institute of Mining and Metallurgy. The Mineral Resource estimate was completed by Mr Dean O'Keefe the Principal Resource Geologist of MEC Mining. MEC Mining is a global technical consulting firm specialising in mining services capabilities across the mining life cycle from early-stage exploration through development, mine planning, onsite management, to mine closure and rehabilitation. Mr O'Keefe is a Fellow of the Australasian Institute of Mining and Metallurgy. Mr Gordon Barnes, Mr Mike Rosenstreich, and Mr O'Keefe have sufficient experience that is relevant to the styles of mineralisation and types of deposits under consideration and to the activities being undertaken to qualify as Competent Person(s) as defined in the 2012 Edition of the "Australasian Code for Reporting of Exploration Results, Mineral Resources and Ore Reserves". Mr Barnes, Mr Rosenstreich, and Mr O'Keefe have consented to the inclusion of this information in the form and context in which it appears in this report.

## Disclaimer

This presentation has been prepared by Helix Resources Limited ("Company"). The presentation does not contain all the information that a prospective investor may require about the companies, their business or the proposal. It is not a complete statement of material information. Except where stated, the information disclosed in this presentation ("Information") relates to the proposed business of the Company at the date of this document. This presentation does not contain advice relating to legal, taxation or investment matters. The Company makes no representation or warranty (express or implied) as to the accuracy, reliability or completeness of the Information. The Company and its subsidiaries, directors, employees, agents and consultants shall have no liability (including liability to any person by reason of negligence or negligent misstatement) for any statements, opinions, information or matters (express or implied) arising out of, contained in or derived from, or for any omissions from this presentation, except liability under statute that cannot be excluded.

This presentation does not contain an offer of securities in a Company, nor an invitation to apply for such securities. Nothing in this document should be construed as investment advice or financial product advice, whether personal or general, for the purposes of Section 766B of the Corporations Act. The document does not involve or imply a recommendation or a statement of opinion in respect

of whether to buy, sell or hold a financial product. You should obtain professional advice and carry out your own independent investigations and assessment of the Information before acting.

## Forward Looking Statements

This presentation may include forward-looking statements. These forward-looking statements are not historical facts but rather are based on Helix Resources Limited's (Helix) current expectations, estimates and assumptions about the industry in which Helix operates, and beliefs and assumptions regarding Helix's future performance. Words such as "anticipates", "expects", "intends", "plans", "believes", "seeks", "estimates", "potential" and similar expressions are intended to identify forward-looking statements. Forward-looking statements are only predictions and are not guaranteed, and they are subject to known and unknown risks, uncertainties and assumptions, some of which are outside the control of Helix. Past performance is not necessarily a guide to future performance and no representation or warranty is made as to the likelihood of achievement or reasonableness of any forward-looking statements or other forecast. Actual values, results or events may be materially different to those expressed or implied in this presentation. Given these uncertainties, recipients are cautioned not to place reliance on forward looking statements. Any forward-looking statements in this presentation speak only at the date of issue of this presentation. Subject to any continuing obligations under applicable law and the ASX Listing Rules, Helix does not undertake any obligation to update or revise any information or any of the forward-looking statements in this presentation or any changes in events, conditions or circumstances on which any such forward looking statement is based.

## Cautionary Statement on Visual Estimates of Mineralisation

References in this presentation to visual results are from RC and diamond core drilling. Visible oxide mineralisation in RC drilling consisted of gossan and trace malachite. Fresh sulphide mineralisation (chalcopyrite and pyrite) consisted of disseminated, veins and stringers as well as semi to massive pyrite and chalcopyrite. Visible oxide mineralisation in HQ and NQ core drilling consisted of trace - minor copper hydroxides and possible gossan (hematite and goethite) with trace chalcocite. Fresh sulphide mineralisation consisted of disseminated, veins and stringers as well as semi to massive chalcopyrite. Further details are in ASX reports referenced.

Visual estimates of percentages are based on preliminary visual observations of the RC chips and drill core and may not be representative of the entire sample interval. Laboratory assays are required for representative estimates of copper and other metal contents.